

Flexible Hose with Insulation - Straight & Elbow

Installation Instructions



Pump House
Glaisdale Drive East
Nottingham.
UK NG8 4LY
Tel: +44 (0)115 900 5858
Fax: +44 (0)115 929 4468

sales@pumph.co.uk
www.pumph.co.uk



Flexible Hose Assembly Instructions

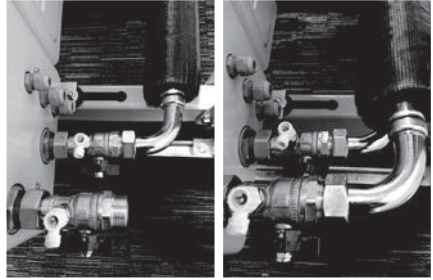
STEP TO STEP GUIDE TO ASSEMBLY - ELBOW VERSION

1



Fit the isolator valves to the flow and return connections of the unit.

2



Screw the hose connector to the isolator valves.

3



Mark and cut the elbow insulation with slots to match the valve handle and bleed nipple.

4



Wrap and secure the elbow insulation around the valve.

5



Seal the connecting length and elbow together with the lengths of insulation tape.

WHAT IS IN THE BOX

LIST OF COMPONENTS		
Item	Qty.	Description
A	2	Flexible hose female connector with elbow
B	2	750 mm length of insulation
C	2	Insulation elbows
D	4	Strips of tape

Flexible Hose Assembly Instructions

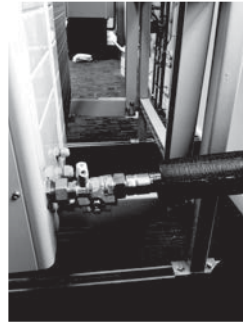
STEP TO STEP GUIDE TO ASSEMBLY - STRAIGHT VERSION

1



Fit the isolator valves to the flow and return connections of the unit.

2



Screw the hose connector to the isolator valves.

3



Mark and cut the insulation with slots to match the valve handle and bleed nipple.

4



Wrap and secure the insulation around the valve.

5



Seal the end of the insulation length with the tape.

WHAT IS IN THE BOX

LIST OF COMPONENTS

Item	Qty.	Description
A	2	Flexible hose female connector straight length
B	2	750 mm length of insulation
C	4	Strips of tape